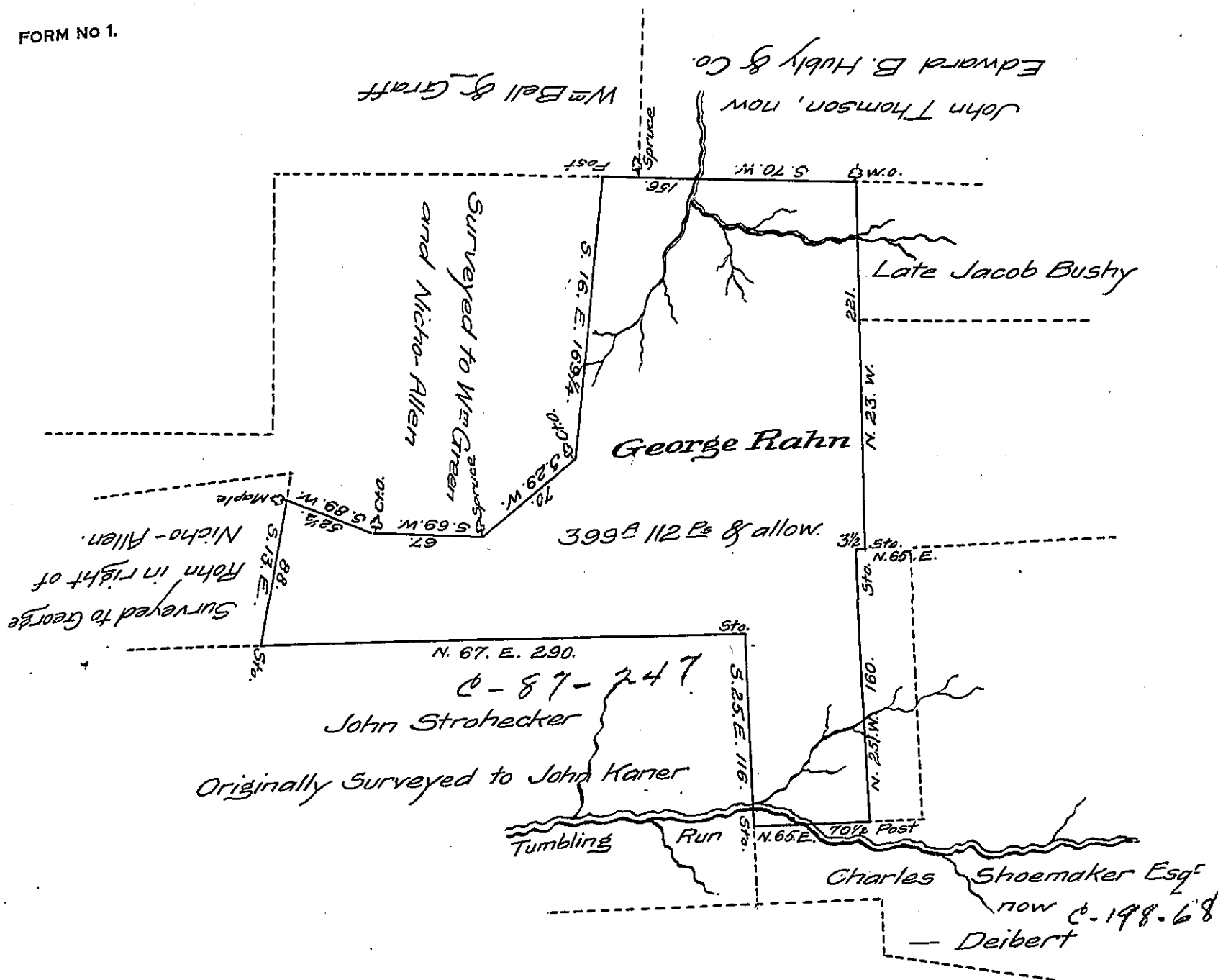


FORM NO 1.



Situate in Schuylkill Township Schuylkill County, Containing  
 399 A 112 P & allowance of six per Cent. for Roads &— surveyed  
 unto George Rahn on the 3<sup>d</sup> day of August A.D. 1829. by Virtue of a  
 Warrant granted to him dated the 5<sup>th</sup> of Jany. A.D. 1829.

By George Reber D.S.

To Gabriel Hiester Esq.  
 Sur<sup>g</sup> Gen<sup>l</sup> of Penn<sup>a</sup>

Unimproved. —

Part of the above Survey is claimed by Lewis Reese. —

IN TESTIMONY that the above is a copy of the original remaining on file in  
 the Department of Internal Affairs of Pennsylvania, made  
 conformably to an Act of Assembly approved the 16th day of  
 February, 1833, I have hereunto set my Hand and caused  
 the Seal of said Department to be affixed at Harrisburg,  
 this sixth day of February 1908.

*Henry Howell*  
 Secretary of Internal Affairs.